

Travelport Worldspan D.I.R. Car Availability and Rule Response Enhancements Prepayment Required and Cancellation Information

Developer Advisory number:	569
Version:	03
Load to production:	29-Sep-15 05:30 EDT 10:30 BST
High level description:	Worldspan car providers will have the ability to return car pre-paid rates and cancellation information within availability and rules when applicable.
Impact summary:	D.I.R. Car Response Message users are Impacted No terminal display (green-screen) changes are being made at this time.
Reason for issue:	Update – The original “Load to Production” date has been modified to 29 th September 2015.
Customer impact:	<input type="checkbox"/> Internal only <input checked="" type="checkbox"/> Developers <input type="checkbox"/> Agency customers <input type="checkbox"/> Airline customers <input checked="" type="checkbox"/> eCommerce customers <input checked="" type="checkbox"/> Car, hotel, rail or cruise customers
System:	<input type="checkbox"/> Travelport Galileo <input type="checkbox"/> ACH <input type="checkbox"/> Travelport Apollo <input type="checkbox"/> RCH <input checked="" type="checkbox"/> Travelport Worldspan <input type="checkbox"/> Travelport Rooms and More <input type="checkbox"/> AXESS <input type="checkbox"/> Merchandising
Load to copy:	Available now
Web services: (API and messaging)	D.I.R. – Car message customers required to develop to utilize this enhancement.
Issue history:	Version 01 issued: 29-Apr-15 Version 02 issued: 10-Jun-15

Overview

Travelport Worldspan car rental providers will have the ability to send a notification of car pre-paid rates and cancellation information within car availability and rules.

- D.I.R. Car Rule (VRD) Response Message - returns cancellation information for pre-payment
- D.I.R. Car Rule (VRD) Response Message - returns pre-payment rates
- D.I.R. Car Availability (VA) Response Message – returns pre-payment rates

Customer benefit

- Parity with other booking.com sites
- Improve the accuracy and efficiency in which Online Travel Agencies can consume content from Travelport
- Online Travel Agencies will use this information to trigger specific payment features on their site when the rate is prepaid

Detail and customer examples

Car Rule Response:

Current D.I.R. Car Rule response message enhanced to return “Car Prepayment” information when applicable. Return car Prepayment Cancellation advisory rule text in the response.

Car Availability Response:

Current D.I.R. Car Availability response message enhanced to return “Prepayment Required Indicator” when applicable.

“A” = Applicable/Required

“B” = Not Required.

Car Rule Response:

Current D.I.R. Car Rule (VRD) response message enhanced with two new nodes to return “Prepayment Required Indicator” and “Prepayment Credit Card(s)” allowed for Prepayment. There is no change to the D.I.R. Car Rule request (VRDQ) message for this enhancement.

Current D.I.R. Car Rule (VRD) response message enhanced to return car “Prepayment Cancellation” advisory rule text. There is no change to the D.I.R. Car Rule request (VRDQ) message for this enhancement.

Car Availability Response:

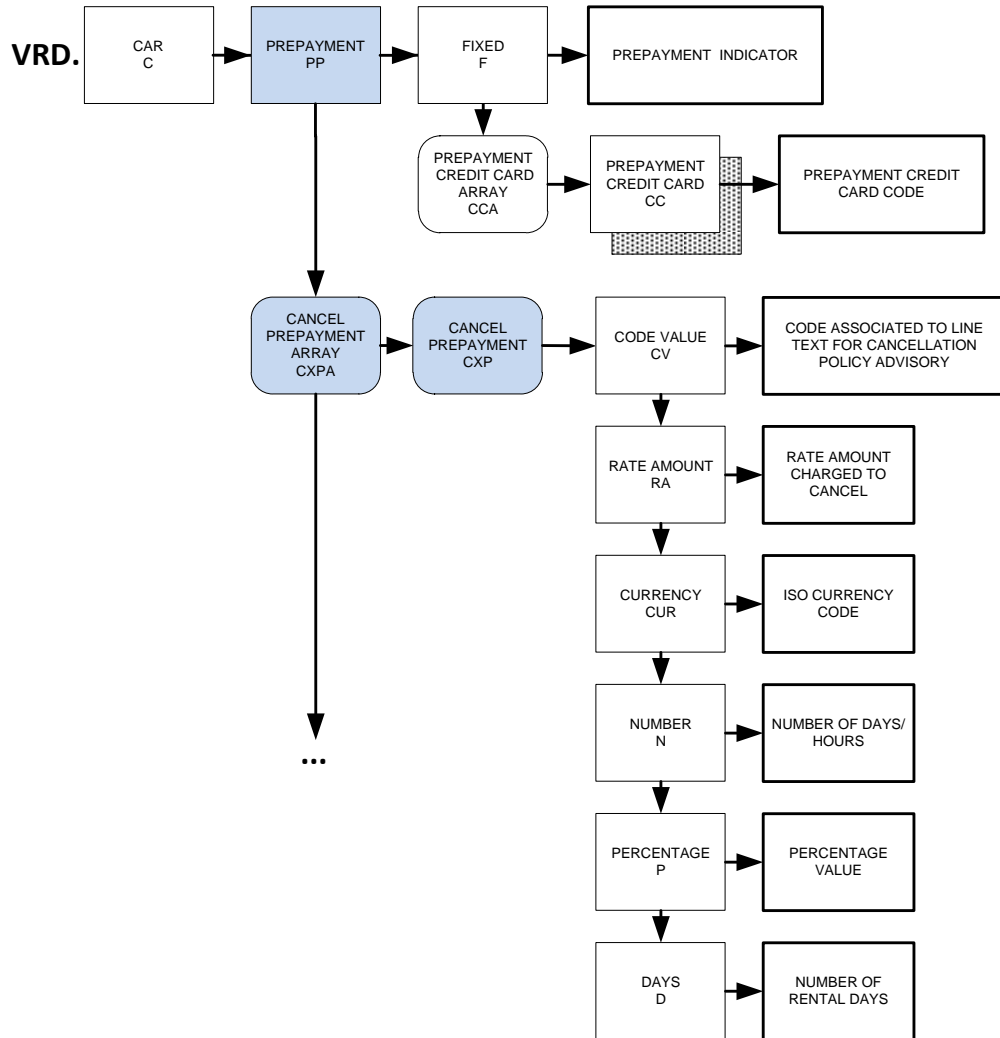
Current D.I.R. Car Availability (VA) response message enhanced to add a new node, “Prepayment Required Indicator” (PR). This node will have a message key of “PR” and only be returned in the response when prepayment is required or not and be indicated with an

“A” = Applicable/Required or “B” = Not Required.

Proposed D.I.R. Car Rule Response Message Development

D.I.R. Car Rule Response Message Diagram

The added Prepayment (PP) and all child nodes along with Cancel Prepayment (CXP.A.CXP) and child nodes are new.



D.I.R. Car Rule Response Message Data Description

The new data items are all shown below:

Pre-Payment**VRD.C.PP.F Pre-Payment Information**

Description	Data type	Size
Pre-Payment Indicator A - Required B – Not required	Switch	1

VRD.C.PP.CC Pre-Payment Credit Card

Description	Data type	Size
Pre-Payment Credit Card Code (e.g. AX = American Express)	FL alpha	2

Car Prepayment Cancellation Policy Advisory Text**VRD.C.CXPA.CXP.CV Code Value**

Description	Data type	Size
Code value associated to policy line advisory cancellation text (values 001 up to 999)	FL numeric	3

VRD.C.CXPA.CXP.RA Rate Amount

Description	Data type	Size
Rate amount charged to cancel (e.g. 00.00 or 50.00)	Signed Number	—

VRD.C.CXPA.CXP.CUR Currency

Description	Data type	Size
ISO Currency Code associated to amount value (e.g. USD)	FL alpha	3

VRD.C.CXPA.CXP.N Number

Description	Data type	Size
Number of Days or Hours (e.g. 002 days 024 hours)	FL numeric	3

VRD.C.CXPA.CXP.P Percentage

Description	Data type	Size
Percentage value (e.g. 010 =10% 025 =25% 050 =50% 100)	FL numeric	3

VRD.C.CXPA.CXP.D Days

Description	Data type	Size
Number of rental days (e.g. 001 up to 365)	FL numeric	3

1P Travelport Car Rule Screen (mock-up) Display

The following text example is a mock-up and for demonstration purposes only.

Awareness Note: The Pre-payment text is not returned to the screen display, it is only returned in the D.I.R. Car Rule message when applicable. The Guarantee Reservation text below is currently returned to the screen today and included here for demonstration purposes only to show the similarities to the Pre-payment text.

GUAR RESERVATION: REQUIRED .. BOOKING SEGMENT MUST CONTAIN A
 /G-CC /G-DEP OR /G-CD FIELD
 GUARANTEE CC: AX CA DC DS VI

PREPAY RESERVATION: REQUIRED .. BOOKING SEGMENT MUST CONTAIN A
PREPAY CC: AX CA DC DS VI

Marker	Screen Item Text	Description	D.I.R. Equivalent
a	PREPAY RESERVATION: REQUIRED	Prepayment required and with credit card.	VRD.C.PP.F Indicator set to "A" - Required
b	PREPAY CC: AX CA DC DS VI	Prepayment allowed with credit cards only. Prepayment credit card code(s) accepted.	VRD.C.PP.CCA.CC This item repeats per code.

D.I.R. Car Rule (VRD) Response Message Example

The following is truncated only to show the new developed D.I.R. nodes in the response that is represented in the screen example above as reference.

- VRD.C.PP.F{A} ←Prepayment Required Indicator
- VRD.C.PP.CCA.CC{AX} ←Prepayment Credit Cards Allowed (repeated per code)
- VRD.C.PP.CCA.CC{CA}
- VRD.C.PP.CCA.CC{DC}
- VRD.C.PP.CCA.CC{DS}
- VRD.C.PP.CCA.CC{VI}

D.I.R. Car Rule Response Message Scenarios Referenced to Screen Policy Text

Car providers are to choose the coded value text that applies to the cancellation policies in effect for the rental. Some coded values also have variables that the car provider must also provide.

The coded value identifies the text string and the items within the < > are the variables.

For example: <5.00> <USD> fee to cancel up to <24> hours prior to pick-up

Car providers may choose more than one coded value as applicable. (See examples on page 3)

A D.I.R. gray shaded box will follow each "Coded Value" line to include the D.I.R. Car Rule Message equivalent for that item.

The blue highlight text under each Coded Value represents the D.I.R. equivalent returned for this specific item.

Coded Value	Fixed Text
901	Cancellation not permitted
VRD.C.CXPA.CXP.CV{001}	
902	Cancellation penalty charges are inclusive of taxes, fees, mandatory surcharges, and any applicable drop charge and optional service fees
VRD.C.CXPA.CXP.CV{002}	

Applicable to Rate Amount

Coded Value	<Rate Amount>	<Currency Code>	Fixed Text	<Number>	Fixed Text
903	10.00	USD	Fee to cancel up to	48	hours prior to pick-up
VRD.C.CXPA.CXP.CV{003} VRD.C.CXPA.CXP.RA{10.00} VRD.C.CXPA.CXP.CUR{USD} VRD.C.CXPA.CXP.N{048}					
904	25.00	USD	Fee to cancel if less than	12	hours prior to pick-up
VRD.C.CXPA.CXP.CV{004} VRD.C.CXPA.CXP.RA{25.00} VRD.C.CXPA.CXP.CUR{USD} VRD.C.CXPA.CXP.N{012}					
905	50.00	USD	Fee to cancel up to	7	days prior to pick-up
VRD.C.CXPA.CXP.CV{005} VRD.C.CXPA.CXP.RA{50.00} VRD.C.CXPA.CXP.CUR{USD} VRD.C.CXPA.CXP.N{007}					
906	35.00	USD	Fee to cancel if less than	1	days prior to pick-up
VRD.C.CXPA.CXP.CV{006} VRD.C.CXPA.CXP.RA{35.00} VRD.C.CXPA.CXP.CUR{USD} VRD.C.CXPA.CXP.N{001}					
907	75.00	USD	Fee to cancel reservation		
VRD.C.CXPA.CXP.CV{007} VRD.C.CXPA.CXP.RA{75.00} VRD.C.CXPA.CXP.CUR{USD}					
908	100.00	USD	Fee for no show		
VRD.C.CXPA.CXP.CV{008} VRD.C.CXPA.CXP.RA{100.00} VRD.C.CXPA.CXP.CUR{USD}					

Applicable to Percentage

Coded Value	<Percentage>	Fixed Text	<Number>	Fixed Text
909	10	Percent prepayment forfeiture to cancel up to	24	hours prior to pick-up
VRD.C.CXPA.CXP.CV{009} VRD.C.CXPA.CXP.N{024} VRD.C.CXPA.CXP.P{010}				
910	100	Percent prepayment forfeiture to cancel less than	24	hours prior to pick-up
VRD.C.CXPA.CXP.CV{010} VRD.C.CXPA.CXP.N{024} VRD.C.CXPA.CXP.P{100}				
911	25	Percent prepayment forfeiture to cancel up to	5	days prior to pick-up
VRD.C.CXPA.CXP.CV{011} VRD.C.CXPA.CXP.N{005} VRD.C.CXPA.CXP.P{025}				
912	75	Percent prepayment forfeiture to cancel less than	1	days prior to pick-up
VRD.C.CXPA.CXP.CV{012} VRD.C.CXPA.CXP.N{001} VRD.C.CXPA.CXP.P{075}				
913	10	Percent rental charge fee to cancel, up to maximum	24	hours rental
VRD.C.CXPA.CXP.CV{013} VRD.C.CXPA.CXP.N{024} VRD.C.CXPA.CXP.P{010}				
914	100	Percent rental charge fee to cancel, up to maximum	7	days rental
VRD.C.CXPA.CXP.CV{014} VRD.C.CXPA.CXP.N{007} VRD.C.CXPA.CXP.P{100}				
915	50	Percent prepayment forfeiture to cancel		
VRD.C.CXPA.CXP.CV{015} VRD.C.CXPA.CXP.P{050}				
916	100	Percent prepayment forfeiture for no show		
VRD.C.CXPA.CXP.CV{016} VRD.C.CXPA.CXP.P{100}				

Applicable to Number of Days

Coded Value	<Number of days>	Fixed Text	<Number>	Fixed Text
917	0	Days rental charged to cancel up to	24	hours prior to pick-up
VRD.C.CXPA.CXP.CV{017} VRD.C.CXPA.CXP.N{024} VRD.C.CXPA.CXP.D{000}				
918	1	Days rental charged to cancel if less than	12	hours prior to pick-up
VRD.C.CXPA.CXP.CV{018} VRD.C.CXPA.CXP.N{012} VRD.C.CXPA.CXP.D{001}				
919	0	Days rental charged to cancel up to	7	days prior to pick-up
VRD.C.CXPA.CXP.CV{019} VRD.C.CXPA.CXP.N{000} VRD.C.CXPA.CXP.D{007}				
920	1	Days rental charged to cancel if less than	1	days prior to pick-up
VRD.C.CXPA.CXP.CV{20} VRD.C.CXPA.CXP.N{001} VRD.C.CXPA.CXP.D{001}				
921	1	Days rental charged to cancel		
VRD.C.CXPA.CXP.CV{021} VRD.C.CXPA.CXP.D{001}				
922	7	Days rental charged for no show		
VRD.C.CXPA.CXP.CV{022} VRD.C.CXPA.CXP.D{007}				

Applicable to Number of Days and Rate Amount

Coded Value	<Number of days>	Fixed Text	Number	<Rate Amount>	<Currency Code>	Fixed Text	<Number>	Fixed Text
923	1	Days rental	Minimum of	25.00	USD	Charged to cancel up to	12	hours prior to pick-up
VRD.C.CXPA.CXP.CV{023} VRD.C.CXPA.CXP.RA{25.00} VRD.C.CXPA.CXP.CUR{USD} VRD.C.CXPA.CXP.N{012} VRD.C.CXPA.CXP.D{001}								
924	2	Days rental	Maximum of	50.00	USD	Charged to cancel up to	24	hours prior to pick-up
VRD.C.CXPA.CXP.CV{024} VRD.C.CXPA.CXP.RA{50.00} VRD.C.CXPA.CXP.CUR{USD} VRD.C.CXPA.CXP.N{024} VRD.C.CXPA.CXP.D{002}								

925	4	Days rental	Minimum of	100.00	USD	Charged to cancel less than	12	hours prior to pick-up
VRD.C.CXPA.CXP.CV{025} VRD.C.CXPA.CXP.RA{100.00} VRD.C.CXPA.CXP.CUR{USD} VRD.C.CXPA.CXP.N{012} VRD.C.CXPA.CXP.D{004}								
926	3	Days rental	Maximum of	75.00	USD	Charged to cancel less than	24	hours prior to pick-up
VRD.C.CXPA.CXP.CV{026} VRD.C.CXPA.CXP.RA{75.00} VRD.C.CXPA.CXP.CUR{USD} VRD.C.CXPA.CXP.N{024} VRD.C.CXPA.CXP.D{003}								
927	1	Days rental	Minimum of	50.00	USD	Charged to cancel up to	3	days prior to pick-up
VRD.C.CXPA.CXP.CV{027} VRD.C.CXPA.CXP.RA{50.00} VRD.C.CXPA.CXP.CUR{USD} VRD.C.CXPA.CXP.N{003} VRD.C.CXPA.CXP.D{001}								
928	7	Days rental	Maximum of	100.00	USD	Charged to cancel up to	1	days prior to pick-up
VRD.C.CXPA.CXP.CV{028} VRD.C.CXPA.CXP.RA{100.00} VRD.C.CXPA.CXP.CUR{USD} VRD.C.CXPA.CXP.N{007} VRD.C.CXPA.CXP.D{001}								
929	1	Days rental	Minimum of	25.00	USD	Charged to cancel less than	1	days prior to pick-up
VRD.C.CXPA.CXP.CV{029} VRD.C.CXPA.CXP.RA{25.00} VRD.C.CXPA.CXP.CUR{USD} VRD.C.CXPA.CXP.N{001} VRD.C.CXPA.CXP.D{001}								
930	3	Days rental	Maximum of	50.00	USD	Charged to cancel less than	2	days prior to pick-up
VRD.C.CXPA.CXP.CV{030} VRD.C.CXPA.CXP.RA{50.00} VRD.C.CXPA.CXP.CUR{USD} VRD.C.CXPA.CXP.N{002} VRD.C.CXPA.CXP.D{003}								

D.I.R. Car Rule Response Message Scenarios Referenced to Screen Policy Text

Car Rule Mock-up Rule Response for demonstration purposes only.

The follow D.I.R. Car Rule Response (VRD) message equates to the data in the following text scenario.

Coded Value	<Number of days>	Fixed Text	Number	<Rate Amount>	<Currency Code>	Fixed Text	<Number>	Fixed Text
927	1	Days rental	Minimum of	50.00	USD	Charged to cancel up to	3	days prior to pick-up
VRD.C.CXPA.CXP.CV{927} VRD.C.CXPA.CXP.RA{50.00} VRD.C.CXPA.CXP.CUR{USD} VRD.C.CXPA.CXP.N{003} VRD.C.CXPA.CXP.D{001}								

D.I.R. Car Rule Response Message Mock-up Example

NOTE: This example is not static order and should not be developed as such by D.I.R. customer. Customer should expect any order of data in the response.

```

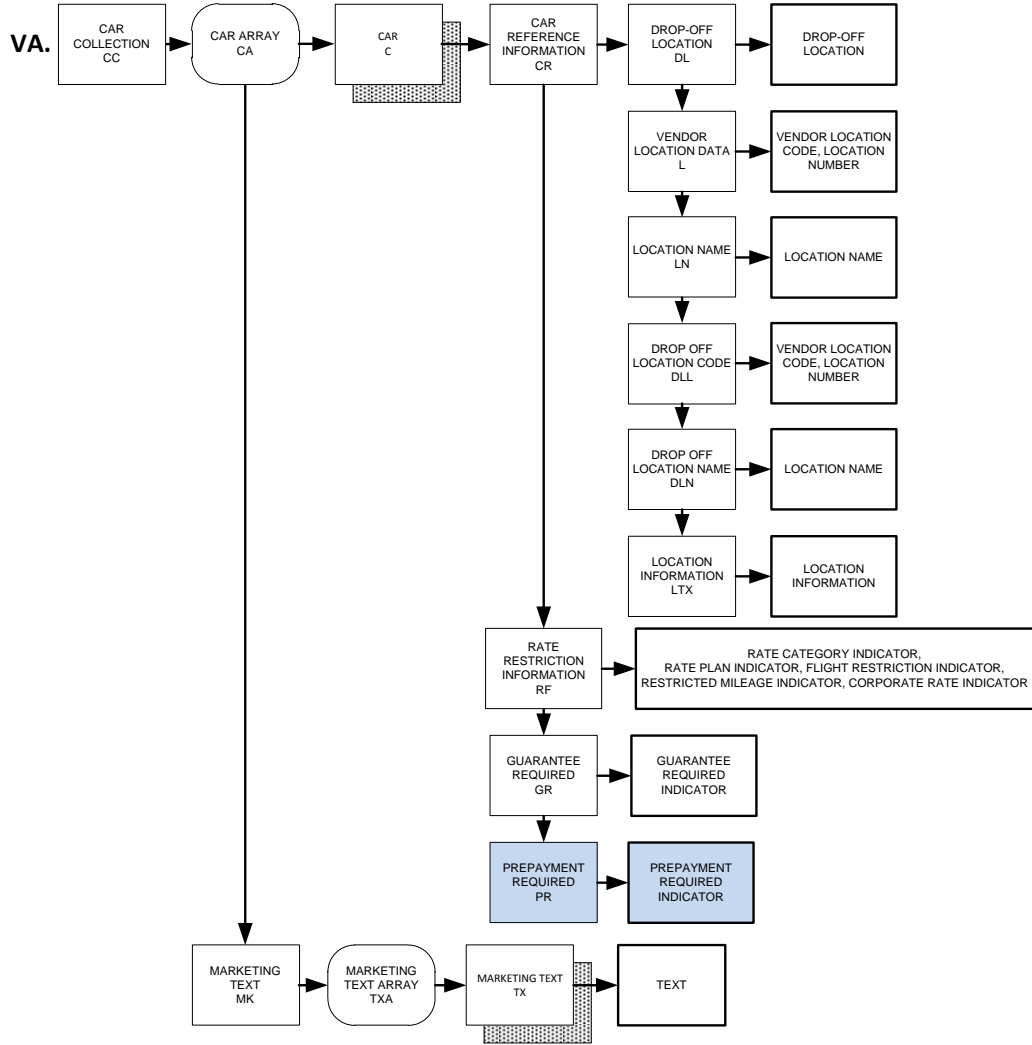
VRD.F{DEN20151002015108  }
VRD.C.WC{A}
VRD.C.CR.L{T002}
VRD.C.CR.RD{COUS  }
VRD.C.CR.LN{DENVER FIREFLY}
VRD.C.CR.VN{FIREFLY}
VRD.C.CR.V{FF  }
VRD.C.CXPA.CXP.C{927}
VRD.C.CXPA.CXP.RA{50.00}
VRD.C.CXPA.CXP.CUR{USD}
VRD.C.CXPA.CXP.N{3}
VRD.C.CXPA.CXP.D{001}
VRD.AA.AL{23586 EAST 78TH AVENUE}
VRD.AA.AL{  }
VRD.AA.AL{DENVER}
VRD.AA.AL{CO US}
VRD.AA.AL{80249}
VRD.PH.DD{303-342-5434}
VRD.TIA.ARRV.H.TI{0001 0100  }
VRD.TIA.ARRV.H.TI{0500 2400  }
VRD.TIA.ARRV.F{CN  N}
VRD.TIA.DEPT.H.TI{0001 0100  }
VRD.TIA.DEPT.H.TI{0500 2400  }
VRD.TIA.DEPT.F{CN  N}

```

Proposed D.I.R. Car Availability Response Message Development

D.I.R. Car Availability Response Message Diagram

The Prepayment Required (PR) node below is new.



D.I.R. Car Availability Response Message Data Description

Pre-Payment

VA.CC.CA.C.PR

Prepayment Required

Description	Data type	Size
Prepayment Required Indicator A – Prepayment required B – Prepayment not required	Switch	1

D.I.R. Car Availability (VA) Response Message Example

The following is truncated only to show the new developed D.I.R. nodes in the response

```

VA.F{OAK20151002015107USD}
VA.CC.F{XS06001800}
VA.CC.MK.TXA.TX{IATA NBR NOT ON FILE QUEUE AGENCY INFO TO ZL }
VA.CC.MK.TXA.TX{GREEN MEANS GO. THANK YOU FOR SHOPPING ZL }
VA.CC.CA.C.F{ZL A#B BB }
VA.CC.CA.C.CD{EDAR}
VA.CC.CA.C.RF{ XBBB}
VA.CC.CA.C.GR{B}
VA.CC.CA.C.PR{A}
VA.CC.CA.C.PD.P{495.00}
VA.CC.CA.C.PD.TR{744.76}
VA.CC.CA.C.PD.ITM{0NWXX W2 }
VA.CC.CA.C.PD.NCP{495.00}
VA.CC.CA.C.PD.TNCP{744.76}
VA.CC.CA.C.PD.RP{N8K07}
VA.CC.CA.C.PD.CUR{USD}
VA.CC.CA.C.PD.EC.F{UNL .00}
VA.CC.CA.C.PD.TX{NISSAN VERSA OR SIMILAR}
VA.CC.CA.C.CR.L{T001}
VA.CC.CA.C.CR.DL{SFO}
VA.CC.CA.C.CR.DLL{T001}
VA.CC.CA.C.CR.LTX{CNTR}
VA.CC.CA.C.F{ET A#B BB }
VA.CC.CA.C.CD{ICAR}
VA.CC.CA.C.RF{ XBBB}
VA.CC.CA.C.GR{A}
VA.CC.CA.C.PR{B}
VA.CC.CA.C.PD.P{525.00}
VA.CC.CA.C.PD.TR{789.30}
VA.CC.CA.C.PD.ITM{0NWXX W2 }
VA.CC.CA.C.PD.NCP{525.00}
VA.CC.CA.C.PD.TNCP{789.30}
VA.CC.CA.C.PD.RP{N8K07}
VA.CC.CA.C.PD.CUR{USD}
VA.CC.CA.C.PD.EC.F{UNL .00}
VA.CC.CA.C.PD.TX{COROLLA OR SIMILAR}
VA.CC.CA.C.CR.L{T001}
VA.CC.CA.C.CR.DL{SFO}
VA.CC.CA.C.CR.DLL{T001}
VA.CC.CA.C.CR.LTX{CNTR}
    
```

Travelport provides this document for information purposes only and does not guarantee that the information contained in this document is accurate, current or complete. This document and the products listed herein are subject to change without notice.

© 2015 Travelport. All rights reserved. Travelport, the Travelport logo, Apollo, Galileo, and Worldspan are trademarks of Travelport. All other marks are the property of their respective owners.